

**BLACK
RED
WHITE**

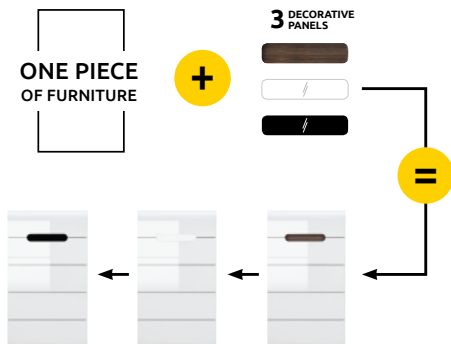
Azteca Trio



The Azteca Trio collection allows you to create an exceptional and **modern** interior with an elegant, **minimalist** design.

THREE VARIANTS

FOR THE PRICE OF ONE PIECE OF FURNITURE!



energy efficient
LED lighting
as standard



tempered
glass



even and silent
closing of fronts



smooth and silent
closing of drawers



mattress and bed insert
optional

Colours:

Body:



white



san remo oak

Front:



white high gloss



san remo oak
(applies only to selected furniture shapes)

Decorative
panel:



wenge oak magic



canterbury
oak (coffee
table only)



glossy white



glossy black

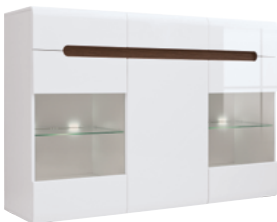
Table
and chair
frame:



wenge oak brown



AZTECA TRIO TV stand
dimensions: 105/41/84 cm
product code: KOM4S_8_11



AZTECA TRIO Chest of drawers
dimensions: 150/41/104 cm
product code: KOM2W1D3S_10_15
*Also available in the san
remo/san remo oak colour.



AZTECA TRIO Chest of drawers
dimensions: 150/41/84 cm
product code: KOM3D3S_8_15
*Also available in the san
remo/san remo oak colour.

AZTECA TRIO Rtv cabinet
dimensions: 150/47/43 cm
product code: RTV2D2S_4_15
*Also available in the san
remo/san remo oak colour.



ULTRA Chair
dimensions: 42/48/85 cm
product code: D09-TXK_ULTRA



AZTECA TRIO Sideboard
dimensions: 105/41/84 cm
product code: SFK4D/8/11
*Also available in the san
remo/san remo oak colour.



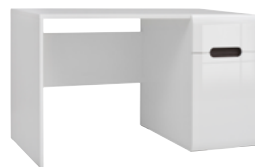
AZTECA TRIO Shelf
dimensions: 150/20/20 cm
product code: P/2/15



AZTECA TRIO Shelf
dimensions: 105/20/20 cm
product code: P/2/11



ULTRA Table
dimensions: 85/145-185/76 cm
product code: D09002-ULTRA



AZTECA TRIO Desk
dimensions: 67/120/76 cm
product code: BIU1D1S_8_12



AZTECA TRIO Hanging cabinet
dimensions: 105/35/41 cm
product code: SFW1K_4_11
*Also available in the san
remo/san remo oak colour.



AZTECA TRIO Hanging
display cabinet
dimensions: 60/35/102 cm
product code: SFW1W_10_6
*Also available in the san
remo/san remo oak colour.



AZTECA TRIO Wardrobe
dimensions: 105/57/193 cm
product code: SZF2D_19_11
*Also available in the san
remo/san remo oak colour.



AZTECA TRIO Chest of drawers
dimensions: 60/41/104 cm
product code: KOM5S_10_6
*Also available in the san
remo/san remo oak colour.

order of
presentation
of dimensions

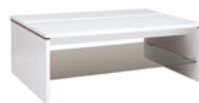






AZTECA TRIO Bed
dimensions: 165/212/35-86 cm
product code: LOZ_160

AZTECA TRIO Night stand
dimensions: 50/41/43 cm
product code: KOM2S_4_5



AZTECA TRIO Coffee table
dimensions: 110/65/40 cm
product code: LAW/4/11



AZTECA TRIO Coffee table
dimensions: 110/65/40 cm
product code: LAW/4/11_1



AZTECA TRIO Glass-door cabinet
wymiar: 90/41/193 cm
product code: REG1W1D_19_9
*Also available in the san
remo/san remo oak colour.



AZTECA TRIO Glass-door cabinet
dimensions: 60/41/193 cm
product code: REG1W1D_19_6
*Also available in the san
remo/san remo oak colour.



AZTECA TRIO Glass-door cabinet
dimensions: 90/41/145 cm
product code: REG1W1D_14_9
*Also available in the san
remo/san remo oak colour.

order of
presentation
of dimensions





AZTECA TRIO Shoe cabinet
dimensions: 90/37/52 cm
product code: SFK2D/5/9



AZTECA TRIO Chest of drawers
dimensions: 60/37/104 cm
product code: KOM1D1S/10/6



AZTECA TRIO Hanger
dimensions: 90/30/143 cm
product code: PAN/14/9



AZTECA TRIO Mirror
dimensions: 89/2/60 cm
product code: LUS/9/6



AZTECA TRIO Wardrobe
dimensions: 220/57/210 cm
product code: SZF2D2L_21_22



AZTECA TRIO Wardrobe
dimensions: 180/57/210 cm
product code: SZF3D_21_18



AZTECA TRIO Bookcase
dimensions: 80/37/195 cm
product code: REG2D/19/8

order of
presentation
of dimensions



**BLACK
RED
WHITE**

Black Red White S.A.

ul. Krzeszowska 63
23-400 Biłgoraj

Customer Service

tel. +48 84 685 02 02
e-mail: bok@brwsa.pl



BlackRedWhitePL



blackredwhitepl



blackredwhitepl



brwmeble

See more on:

www.brw.com

The manufacturer reserves the right to make structural changes to the offered furniture models, without changing their general nature. Due to printing constraints, the colours shown on the poster may differ from the actual colours of the furniture offered